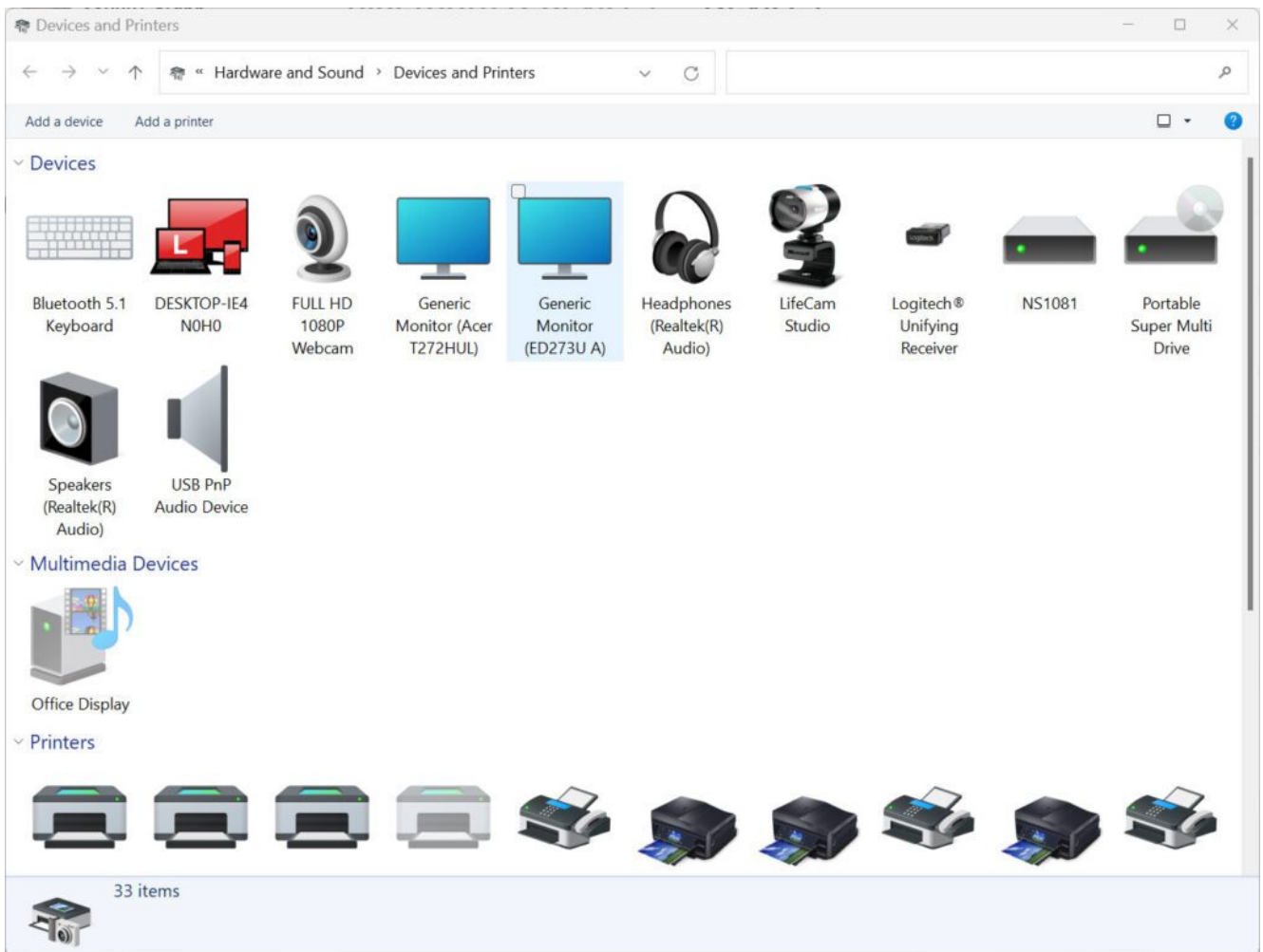


The Old Devices And Printers

written by John Grubb | October 24, 2022

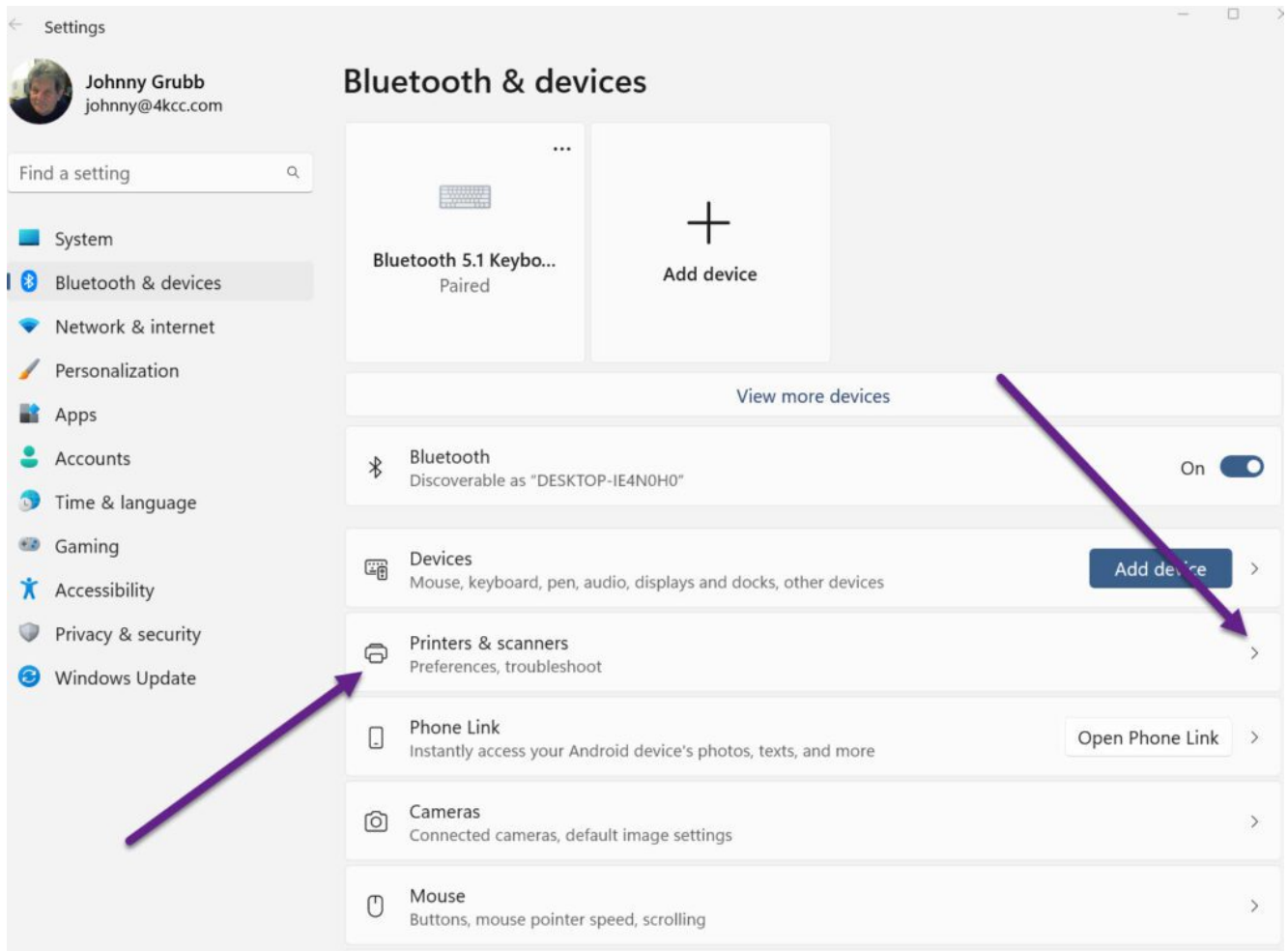


The old devices and printers – if you’ve been a Windows Control Panel user over the years, you’re familiar with the picture above. I’ve always found it useful for troubleshooting, especially printer issues.

Microsoft Makes A Devices and Printers Change

Since Windows 11 first appeared, Microsoft has tried to move away from the Control Panel functions. Basically, it seems they don’t want users to use the Control Panel. For some

functions, it really isn't a big deal. However, in the latest release of Windows 11 – 22H2 – when you do open the Control Panel, some things have changed. When you click on Devices and Printers, you get this window:



I added two arrows so you'll see the "Printers and Scanners" location. Then, if you click on the arrow to the right, you get this window:

Bluetooth & devices > Printers & scanners

Add a printer or scanner

Add device



Adobe PDF



Brother MFC-J491DW



Brother MFC-J491DW Printer



Brother QL-810W (Copy 1)
Offline



EPSON WF-2630 Series (FAX)



EPSON XP-850 Series



Of course, your printers and scanners would be listed and not mine. If you click on the arrow on the right beside one of your printers, you get this window:

... > Printers & scanners > Brother MFC-J491DW Printer



Brother MFC-J491DW Printer

Printer status: Idle

Set as default

Remove

Printer settings

Open print queue



Print test page



Run the troubleshooter



Printer properties



Printing preferences

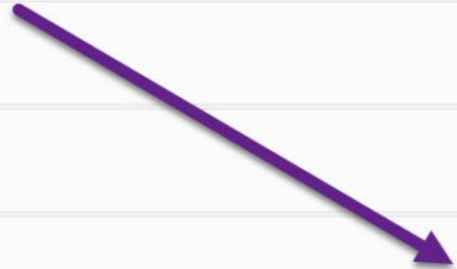
Orientation, page order, pages per sheet, borders, paper source



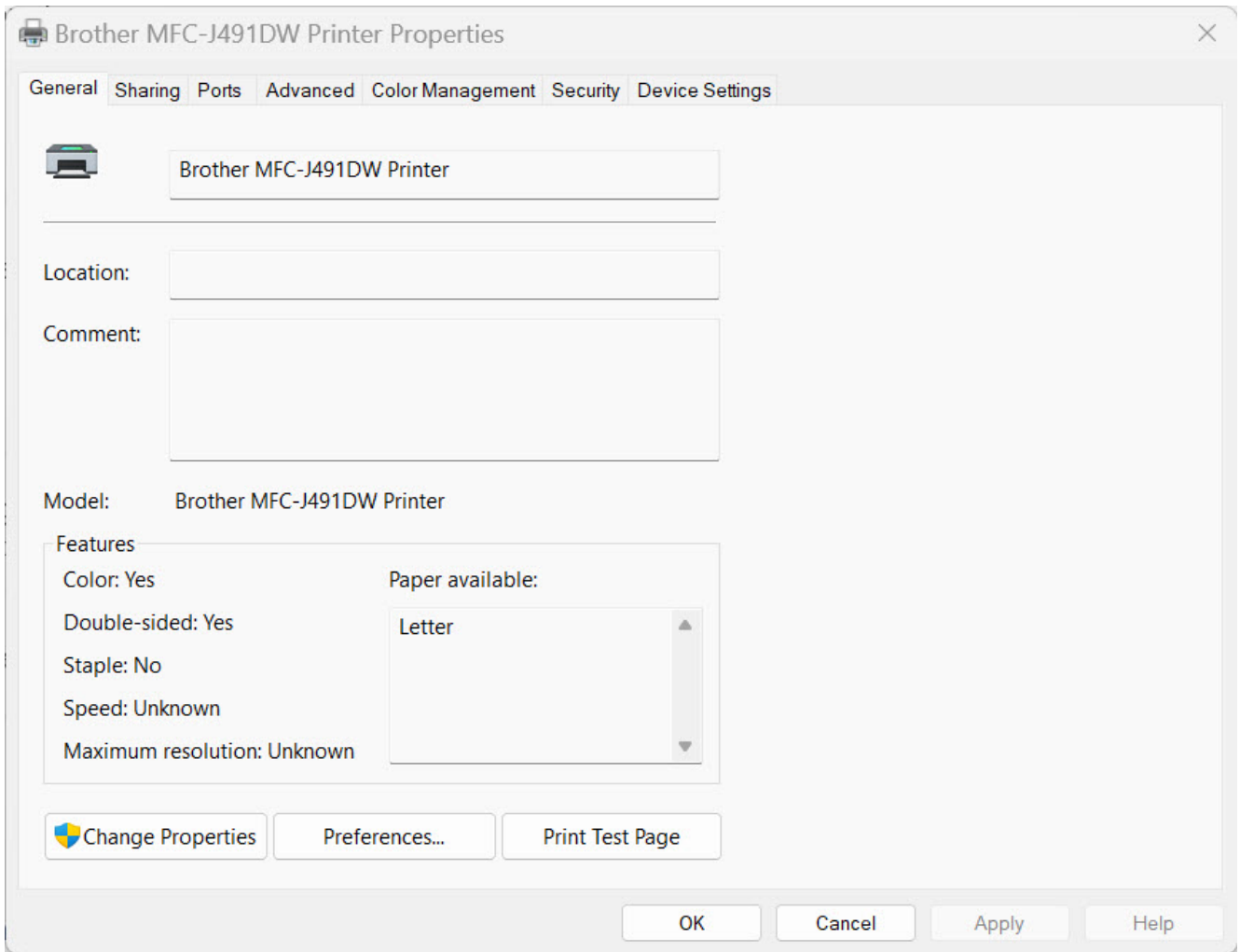
Hardware properties



More devices and printers settings



As I mentioned, you may not have this same printer but hopefully, you get the idea. Now, if I click where the arrow is pointing above, I get this window:



Does the last window above look familiar?

Why I Find The New Process [Annoying](#)

When I have to get to a printer's properties using the new process, it takes 6 steps. Using the old devices and printers, getting to the same window takes 3 steps. I find that annoying because computers are supposed to save us time and procedure steps. This does not!

Here's How To Get Back To The Old Devices And Printers Easily

If you're like me and you just want the same window you've had before, I'm going to show you how to get it! You'll follow

this procedure one time and, after that, it will be one click to get to the old devices and printers.

- From the Start Menu, open Settings
- In the left column, click Bluetooth & devices
- On the right side, open Devices
- Scroll down to More devices and printer settings
- Click on the arrow on the right side
- When the old Devices and Printers window opens, click in the address bar and drag it to your Desktop
- You now have a shortcut to go directly to the window

Just in case, you need a 30-second visual of the steps, click on this picture:



When you're on YouTube., please remember to Subscribe, Like and Share! Thanks